

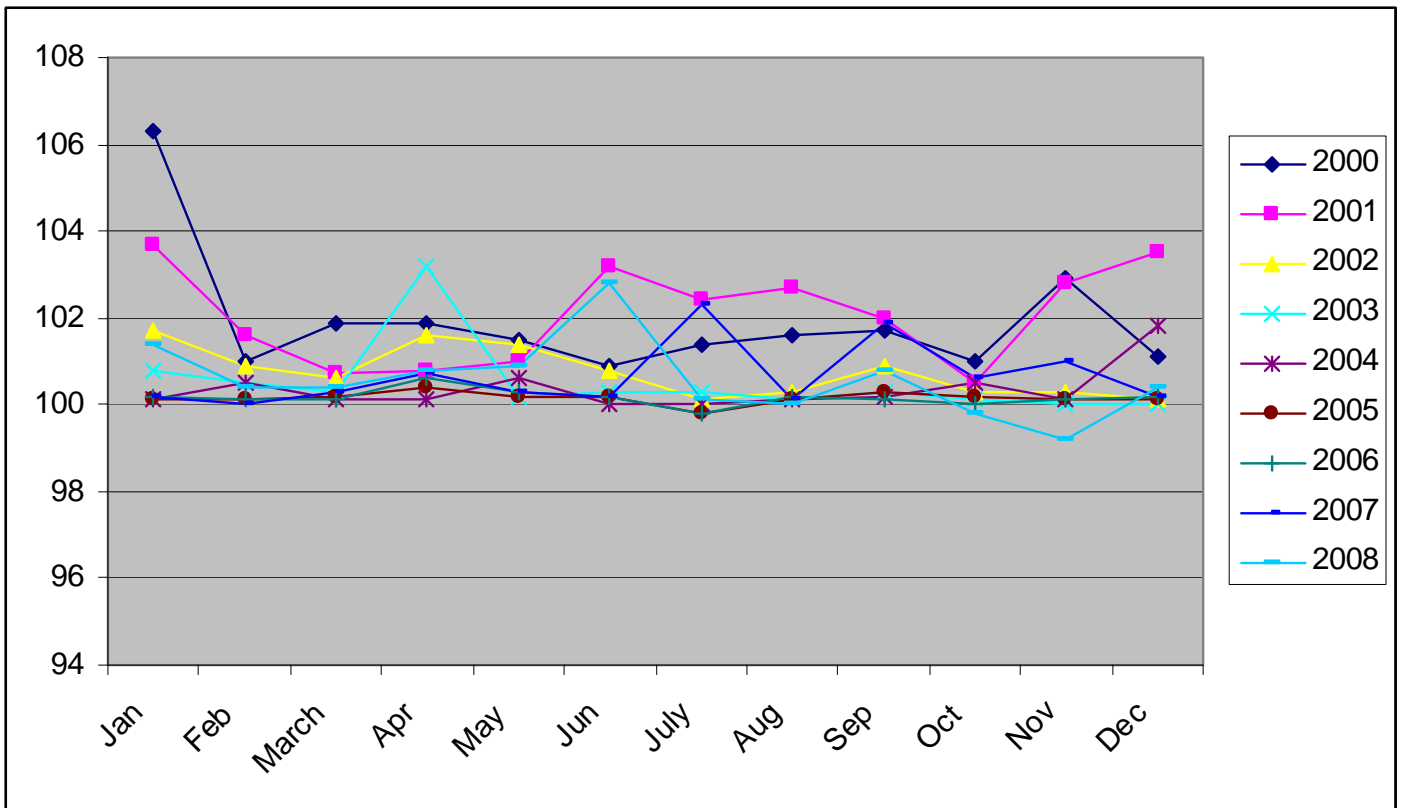
### CONSUMER PRICE 2009

	<b>Jan</b>	<b>Feb</b>	<b>March</b>	<b>Apr</b>	<b>May</b>	<b>Jun</b>	<b>July</b>	<b>Aug</b>	<b>Sep</b>	<b>Oct</b>	<b>Nov</b>	<b>Dec</b>
<b>december 2008=100</b>	99.8	100.4	100.8	101.5	101.6	101.2	100.6	101.7				
<b>Previous Month=100</b>	99.8	100.7	100.4	100,6	100,1	99,7	99,4	101.1				

	<b>Jan</b>	<b>Feb</b>	<b>March</b>	<b>Apr</b>	<b>May</b>	<b>Jun</b>	<b>July</b>	<b>Aug</b>	<b>Sep</b>	<b>Oct</b>	<b>Nov</b>	<b>Dec</b>
<b>comparable period last year =100</b>	104.9	105.1	105.3	105,3	105,2	104,8	104,4	104.2				

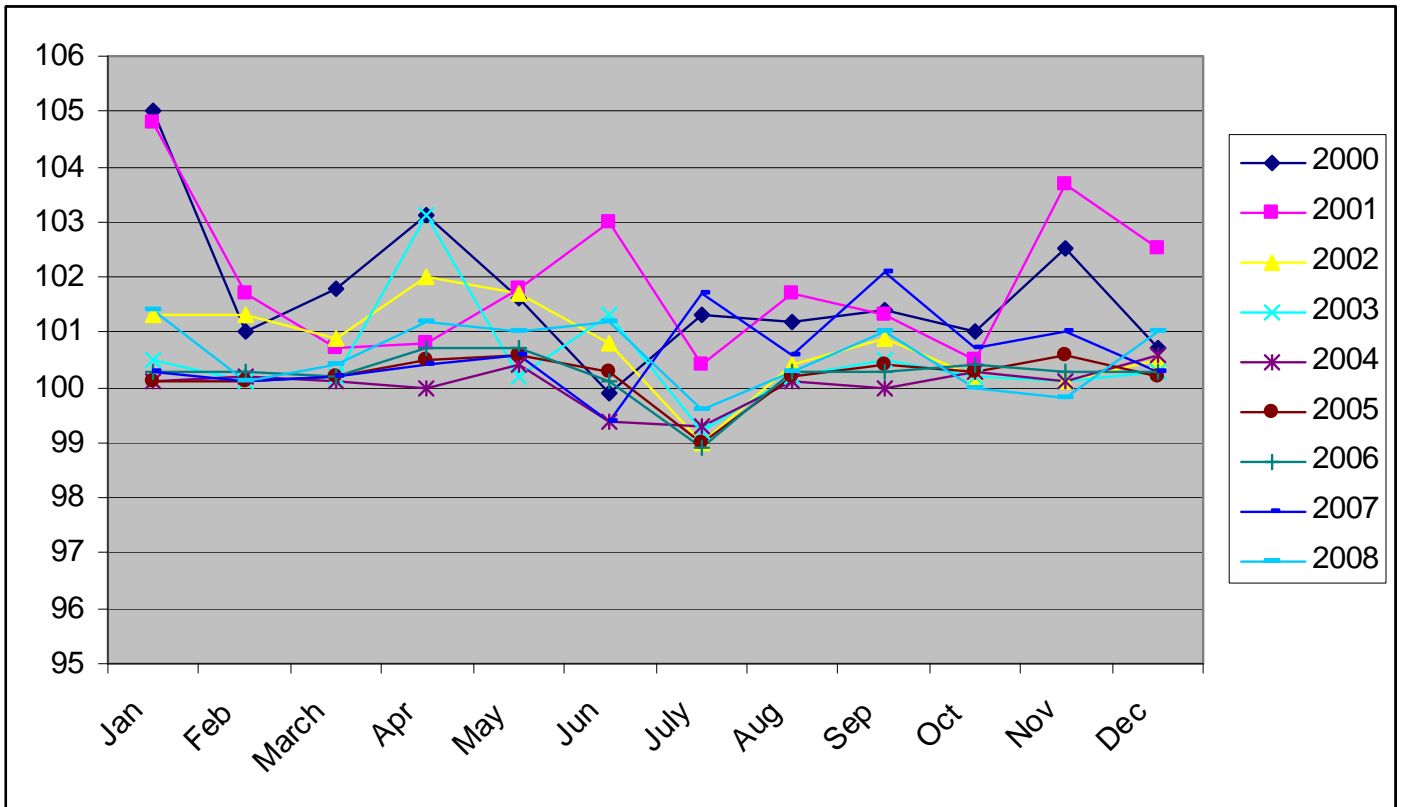
### RETAIL PRICES (chain index)

Year/month	Jan	Feb	March	Apr	May	Jun	July	Aug	Sep	Oct	Nov	Dec
2000	106.3	101	101.9	101.9	101.5	100.9	101.4	101.6	101.7	101	102.9	101.1
2001	103.7	101.6	100.7	100.8	101	103.2	102.4	102.7	102.0	100.5	102.8	103.5
2002	101.7	100.9	100.6	101.6	101.4	100.8	100.1	100.3	100.9	100.3	100.3	100.1
2003	100.8	100.5	100.3	103.2	100.2	100.3	100.3	100.1	100.3	100.1	100.0	100.0
2004	100.1	100.5	100.1	100.1	100.6	100.0	100.0	100.1	100.2	100.5	100.1	101.8
2005	100.1	100.1	100.2	100.4	100.2	100.2	99.8	100.1	100.3	100.2	100.1	100.1
2006	100.2	100.1	100.1	100.6	100.3	100.2	99.8	100.2	100.1	100.0	100.1	100.2
2007	100.2	100.0	100.3	100.7	100.3	100.2	102.3	100.1	101.9	100.6	101.0	100.2
2008	101.4	100.4	100.4	100.8	100.9	102.8	100.1	100.0	100.8	99.8	99.2	100.4



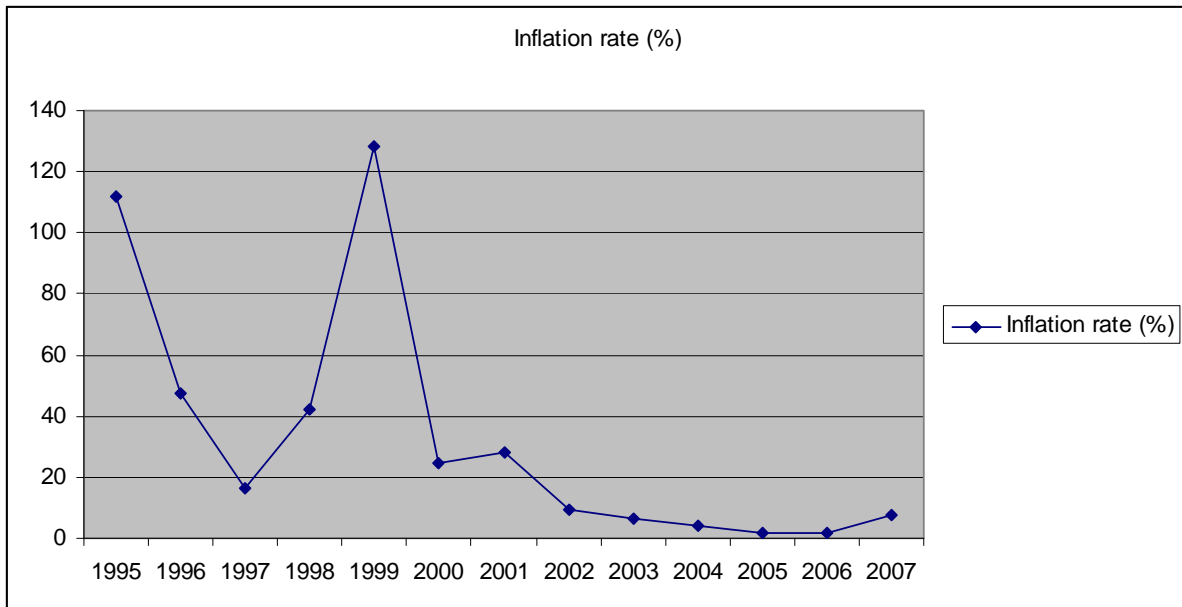
### COSTS OF LIVING (chain index)

Year/m	Jan	Feb	March	Apr	May	Jun	July	Aug	Sep	Oct	Nov	Dec
2000	105	101	101.8	103.1	101.6	99.9	101.3	101.2	101.4	101	102.5	100.7
2001	104.8	101.7	100.7	100.8	101.8	103	100.4	101.7	101.3	100.5	103.7	102.5
2002	101.3	101.3	100.9	102	101.7	100.8	99	100.4	100.9	100.2	100.1	100.5
2003	100.5	100.1	100.2	103.1	100.2	101.3	99.2	100.2	100.5	100.2	100.1	100.3
2004	100.1	100.2	100.1	100	100.4	99.4	99.3	100.1	100.0	100.3	100.1	100.6
2005	100.1	100.1	100.2	100.5	100.6	100.3	99.0	100.2	100.4	100.3	100.6	100.2
2006	100.3	100.3	100.2	100.7	100.7	100.1	98.9	100.3	100.3	100.4	100.3	100.3
2007	100.3	100.1	100.2	100.4	100.6	99.4	101.7	100.6	102.1	100.7	101.0	100.3
2008	101.4	100.1	100.4	101.2	101.0	101.2	99.6	100.3	101.0	100.0	99.8	101.0



## INFLATION

GENERAL RETAIL PRICE INDEX		
Year	Index XII current year/XII previous year	Inflation rate (%)
1995	211.8	111.8
1996	147.2	47.2
1997	116.2	16.2
1998	142	42
1999	228.4	128.4
2000	124.8	24.8
2001	128	28
2002	109.4	9.4
2003	106.7	6.7
2004	104.3	4.3
2005	101.8	1.8
2006	102.0	2.0
2007	-	7.7



### PRICE INDEX AND COSTS OF LIVING - 2008

	Jan.	Feb.	March	April	May	Jun	July	Aug.	Sep.	Oct.	Nov.	Dec.
Consumer price	101.3	101.6	102.0	102.8	103.5	105.3	105.3	105.4	106.5	106.5	105.8	106.9
Retail prices	101.4	101.9	102.3	103.1	104.0	106.9	107.0	107.1	107.9	107.7	106.8	107.3
Costs of living	101.4	101.6	102.0	103.2	104.2	105.4	105.0	105.3	106.4	106.4	106.1	107.2

